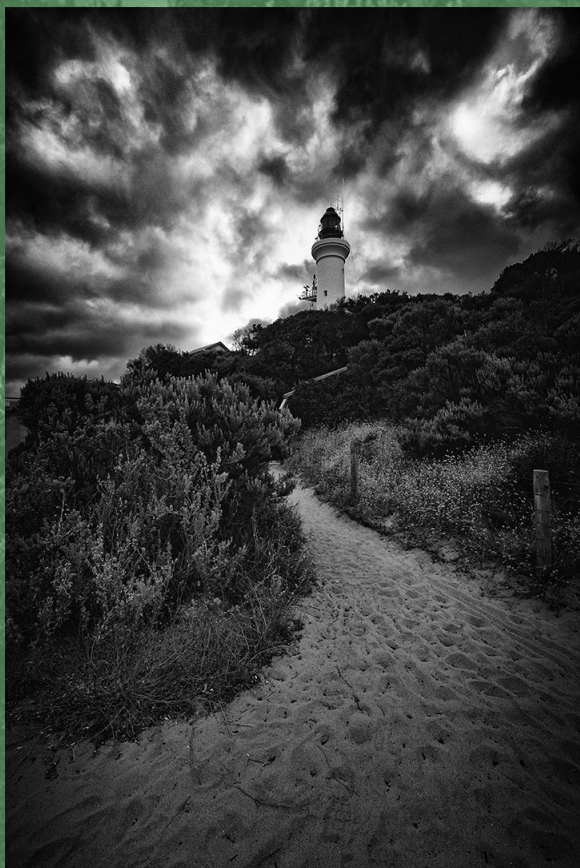


GEELONG CAMERA CLUB

NEWSLETTER

MARCH 2023

REG. NO. A4963



"To the Lighthouse"

By Dee Kelly

2nd Place February EDI 2022

CONTENTS

PRESIDENTS PEN

SYLLABUS

TECH CORNER

FEBRUARY COMPETITION RESULTS

LIGHTSEEKERS SIG

CREATIVE SIG

BIRDS AND NATURE SIG

CLUB NEWS

THE PRESIDENTS PEN

Autumn is just around the corner. My favourite time of the year as I'm sure it is for many of you.

The change in the season as it unfolds is delightful, usually with pleasant, dreamy and sometimes balmy days/evenings. The changes that occur with the soft and warm light conditions, foliage especially on the deciduous trees changing and fallen leaves being scattered into the landscape, provide enchanting landscape scenes begging to be photographed.

Whenever I travel, especially overseas, I nearly always select the autumn season for not only does it offer up so many photographic opportunities but as a small upside, it's outside of the usual holiday season and therefore less crowded.

However, I have experienced, especially in Scotland, the worst of the worst of conditions during autumn and you would seriously think it was the middle of winter. But as Ansel Adams supposedly said "Bad weather makes for good photography".

Some of the most sensational autumn colours to be seen in the landscape will be found in Patagonia. The best autumn colours and landscapes I have ever seen. A number of states in USA, such as New Hampshire, Vermont and Oregon also have autumn colours to behold.

However, not to be outdone, we have some delightful locations such as Bright, Mt. Macedon, Walhalla and Marysville – a nice segue – don't forget the camp at Marysville on the weekend May 19-21. Also let's not overlook Tasmania which, after Patagonia, has the most variety of Fagus species in the world.

Also autumn offers up many photographic events in Victoria such as Moomba, Australian Grand Prix, Avalon Air Show, Easter Festivities, ANZAC Day, KaBloom Festival of Flowers in the Dandenong Ranges to name but just a few.

A great time to be out and about photographing all sorts of genres, events, occasions and opportunities. So prime your kit and get shooting!

Paul Franks

"If you want more interesting photographs, have more interesting experiences. Try something new." - By Elliot Irwin

"One advantage of photography is that it's visual and can transcend language." - By Lisa Kristine, Humanitarian Photographer & Fine Artist

CLUB SYLLABUS

The club syllabus for next month as per below. Please note and be aware that the syllabus is subject to change after publication within this newsletter. Visit the GCC website to keep up to date on the syllabus front.

MARCH 2023

Wed 1st Competition Night: –

- Open Prints, Open EDI's, Altered Reality EDI's
- Entries due for April Open Prints, Open EDI's, Set Subject EDI "Tree/Forests"

Thur 2nd Lightseekers Field Trip

- National Wool Museum - Wildlife Photographer of the Year Exhibition

Wed 8th Team Challenge

- Eastern Beach; Barwon Heads; Torquay; Johnson Park

Thur 9th Lightseekers In-house

Wed 15th Guest Speaker: –

- Paul Rushworth from Werribee Zoo

Thur 16th Lightseekers Field Trip

- Camperdown – Allan Wilkins

Mon 20th Committee Meeting

Wed 22nd Team Challenge Presentation and Nautical Presentation: –

- By Paul Franks & Denise Smeaton

Thur 23rd Lightseekers In-house

Wed 29th Social Night

- Waurin Ponds Hotel

Thurs 30th Lightseekers Field Trip

- Sunnymede Beach – Peter Roupas

APRIL 2023

Sun 2nd Sunday Outing

- Queenscliffe (for nautical themed set subject)

Wed 5th Competition Night: –

- Open Prints, Open EDI's, Set Subject EDI "Trees/Forest"
- Entries due for May competition: Open Prints, Open EDI's, A/R EDI

TECH CORNER

Have you heard the term or come across the phrase “Juice jacking”? Probably not.

Juice jacking is a theoretical type of compromise of devices like phones, tablets and laptops which use the same cable for charging and data transfer, typically a USB cable. The goal of the attack is to either install malware on the device, or to surreptitiously copy potentially sensitive data.

If you travel and find yourself in a location such as an airport, train station, hotel, cafe and even hospitals without sufficient power for your device and use the publically available USB power charging station, you are potentially exposing your device to cybercriminals to install malware.

Not everyone carries with them a portable charging device, or even remember to use it as required, so the publically available USB power charging stations are sometimes seen as a god-send if your device is low or has ran out of power. As much as they offer a quick and easy way of charging up your devices, if you connect your device(s) to a USB power charging station, it's difficult to tell how safe they'll be.

Fortunately, both Apple and Android provide mitigation by warning or preventing the device to mount as a hard drive when connected to a USB port. Also, Juice Jacking is not possible if your device is connected via a USB Data Blocker to disallow a data connection but still allow power charging. A USB Data Blocker:-

- Works with any device that can use a USB-to-device adapter cable to charge.
- OS-free; works with both Android and Apple devices with no software required.
- Allows only power to pass through, not data, protecting against data theft and malware.
- Small size is easy to tuck into a laptop bag, backpack, handbag, pocket, or carry-on.

The main idea behind using a USB data blocker is that it blocks data pins such that there's no data flowing, but your devices will still charge as if directly connected to the USB power charging station.

Juice jacking is not a very common practice, but you should still be aware of the risk. It's small but it is real. A USB Data Blocker will cost between \$7-\$20 and available on Amazon, and other websites if you conduct a Google search.

FEBRUARY COMPETITION RESULTS

PRINTS OPEN A GRADE

JUDGE: CRAIG WATSON



First Place

"Progress Overshadowing History"

By Heather Prince

Second Place

"Aztec Beauty"

By Heather Prince



Third Place

"In the Quiet Moments"

By Shelley McKiernan

FEBRUARY COMPETITION RESULTS

PRINTS OPEN B GRADE

JUDGE: CRAIG WATSON



First Place

"Solitude at Lake Fyans"

By David Rendle

Second Place

"Faithful's Threshold"

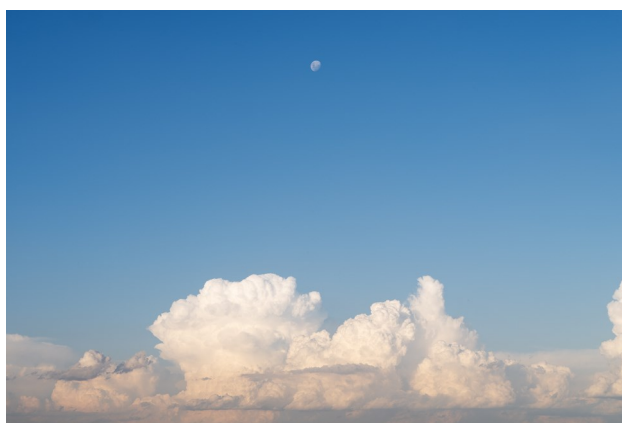
By David Rendle



Third Place

"Avalon Moon"

By Robert Long



FEBRUARY COMPETITION RESULTS

OPEN PRINT A AND B GRADE MERITS

JUDGE: CRAIG WATSON



A GRADE

“Wandiligong Nature Graphics”

By Shelley McKiernan



A GRADE

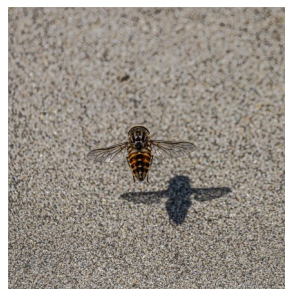
“Blue Dome”

By Hans Kawitzki

B GRADE

“Hover Fly”

By Lyndall Abbott-Young



B GRADE

“Wheating Lines”

By Gerry Van de Meer



FEBRUARY COMPETITION RESULTS

EDI OPEN A GRADE

JUDGE: CRAIG WATSON



First Place

"Fascinated"

By Judith Wood

Second Place

"Antics"

By Sue Wilson



Third Place

"Bright Laughter"

By Frank Kennedy

FEBRUARY COMPETITION RESULTS

EDI OPEN B GRADE

JUDGE: CRAIG WATSON



First Place

"Lucky Tern"

By Geoff Russell

Second Place

"Lamberts Swamp"

By Malcolm Phillips



Third Place

"The Post Office has Closed"

By Marion Best

FEBRUARY COMPETITION RESULTS

OPEN EDI A AND B GRADE MERITS

JUDGE: CRAIG WATSON



A GRADE

"Gog and Magog in the Mist"

By Paul Franks



A GRADE

"Shadows Encroaching"

By Paul Franks

B GRADE

"Salty Beach from Above"

By Bob Medwell



B GRADE

"Full Flight"

By Geoff Russell



FEBRUARY COMPETITION RESULTS

SET SUBJECT A GRADE—INDUSTRIAL

JUDGE: CRAIG WATSON



First Place

“Track to Sunset”

By Paul Franks

Second Place

“The Green Dragon”

By Shelley McKiernan



Third Place

“The Chimney Stack”

By Judith Wood

FEBRUARY COMPETITION RESULTS

SET SUBJECT B GRADE—INDUSTRIAL

JUDGE: CRAIG WATSON



First Place

“Logging Industry”

By Darryl Martin

Second Place

“The Stacks”

By Geoff Russell



Third Place

“Refinery Dawn”

By Chris George

FEBRUARY COMPETITION RESULTS

SET SUBJECT—INDUSTRIAL—A AND B GRADE MERITS

JUDGE: CRAIG WATSON



A GRADE

"Caution"

By Peter Roupas



A GRADE

"Power"

By Chris Reichl

B GRADE

"Obvious"

By Judy Medwell



B GRADE

"Golden Harvest"

By Marion Best



LIGHTSEEKERS

SPECIAL INTEREST GROUP



The Lightseekers Special Interest Group returned early February after the Summer break.

That first week back, we presented Holiday Photos for critique and also discussed where the group wanted to go this year. This helped to guide decisions on education and critiquing, which are an integral part of our group.

A social morning coffee at the Black Cup Café was popular, and a pleasant setting in which to say farewell to two of our members who have now moved to South Australia, Nick and Lyndall Abbott-Young. We wish them well, and will miss their cheery faces.

A weather forecast for the outing to Sovereign Hill caused some concern. Should we go when temperatures were forecast as mid to high 30s. A small group did go, and had an enjoyable day, the heat there not as bad as predicted.

We have an interesting list of outings planned for the year ahead. The next is to the "Wildlife Photographer of the Year" at the Woolstore in Geelong. We are privileged to have this International event here in Geelong, and recommend it to all.

Chris Reichl

CREATIVE SIG

The Creatives met on Thursday Feb 16, our second meeting after the Christmas break. Like everyone we relax over the holidays and don't get up to much creativity at all. We had general discussion about the format of our meetings and areas of creativity to explore.....and we had some good news..... our annual Creative Challenge with Waverley CC is fixed for August 8 and even more exciting is the Set-Subject 'Surreal Landscapes'. So we have some interesting times ahead exploring this topic.

Mick set us back on the creative track with his beautiful collage 'We Bloom, We Die'. That set our challenge for the next few weeks - create a montage/collage. There was also discussion about the benefits of using the Photoshop Neural filter 'Harmonisation' in compiled images and how it blends cut-out additions into the overall scene.



Mick
'We Bloom, We Die'



Heather P
'The Circles of My Life'



Chris
'Beach Still Life'

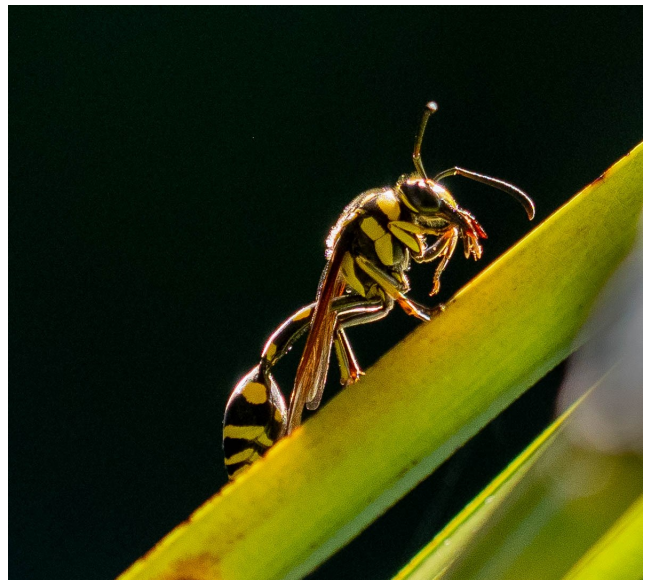


Heather O'F
'Never Wake a Sleeping'



Ketut
'Raining'

Bird and Nature SIG GEELONG CAMERA CLUB



Nature SIG Meetings will be held on the third Tuesday of alternate months and outings will be held most third Saturdays in alternate months.

DATES FOR MEETINGS: Feb 21, April 18, July 18, Sept 19, Nov 14

DATES FOR OUTINGS: March 18, (May is camp month) June 17, August 19, October

21

The first outing will be at the You Yangs, 8am March 18 Meet at visitor's centre car park. Don't forget to sign in on website before coming.

KEEP AN EYE ON THE NEWSLETTER AND WEBSITE FOR FUTURE OUTINGS

Birds & Nature SIG

The inaugural meeting of the Birds & Nature Group took place on the evening of Tuesday 21st February. An initiative by Sue, Sheryle & Sandra, the meeting was an unqualified success with in excess of 24 members present.

After the introduction for the evening, a Zoom session was held with the guest speaker, Kim Wormald EFIAP/g GMAPS who is an internationally awarded and ethical wildlife photographer and is a lifelong bird watcher with a deep love of, and respect for, nature. Her images have received many national and international awards, including thrice as a finalist in the Australian Geographic Nature Photographer of the Year.

Kim has been listed in the PSA Who's Who of Nature Photography but basically she loves immersing herself in nature and waiting to see what, if anything, appears. Sometimes she's so enthralled that she forgets to press the shutter button. At other times she's so in tune with her camera and long lenses that she feels as one with the bird or animal she's photographing.

On the evening, Kim demonstrated and spoke eloquently about her techniques and approach to her photography with many outstanding images portrayed which can only inspire all in attendance. Kim offered up many tips, ideas and suggestions on how to achieve outstanding images when next out in the field. Kim illustrated that you sometimes have to get down and get dirty to get the shot! More about Kim's work will be found at Kim's website www.lirralirra.com

The evening was wrapped up by a members offering a range of suggestions on locations to explore for Bird & Nature photography and whilst having a cuppa' and mingling, members then voted, using "democracy dots", for the their preferences of the first 4 outings to be organised.

Members should keep an eye on the clubs syllabus website for future organised in-house meetings and external outings. A new private Facebook page has been created - Geelong Camera Club Birds & Nature Group – which as a club member you can join and I'm sure that lots of articles and planned events will be published on the page to keep you informed.

Well done Sue, Sheryle and Sandra for a very successful beginning and evening for this new SIG.

Paul Franks

MEMBERSHIP FEES 2022/2023

Full Year, from July

- > Single: \$65
- > *Concession Single: \$55
- > Full-Time Student: \$55
- > Family (2 people): \$95
(Additional members \$35 each)
- > *Concession Family (2 people): \$80
(Additional members \$30 each)

**Concessions: Aged Pension, Govt Seniors Card, Unemployed, Full-Time Student, Disability Pension.*

** See Treasurer for pro-rata rates applicable from January-July.

Studio Hire: \$20.00 using your own studio lights.
\$40.00 + \$50 refundable bond,
if using the Club's studio lights.
(conditions apply)

Darkroom: \$ (currently unavailable)

PRO RATA MEMBERSHIP FEES **2023**

January to End April = 50% of Full Year fees

- > Single: \$32.50
- > Concession Single: \$27.50
- > Full-Time Student: \$27.50
- > Family (2 people): \$47.50
(Additional member \$17.50)
- > Concession Family (2 people): \$42.50
(Additional member \$17.50)

May to 30th July

All Fees = \$nil

Or, 25% for Voting & Competition Rights

- > Single: \$17.50
- > Concession Single: \$17.50
- > Full-Time Student: \$17.50
- > Family (2 people): \$27.50
(Additional member \$12.50)
- > Concession Family (2 people): \$22.50
(Additional members \$12.50)

To pay by EFT: submit your payments to

Westpac Bank
Geelong Camera Club
BSB: 033622
Acct: 400835

Or go to any Westpac bank and pay your membership subscription directly.

You Must Include Your Name and Member Number in the Transaction

Cash and cheques will no longer be accepted by the treasurer.