

# GEELONG CAMERA CLUB

NEWSLETTER

MAY 2025

REG. NO. A4963



THE DREAMING TREE  
By David Grant

## CONTENTS

FROM YOUR COMMITTEE

APRIL COMPETITION RESULTS

SPECIAL INTEREST GROUPS

INTERCLUB PSA REPORT

INTREPID TRAVELLER

CLUB NEWS—GUEST SPEAKER

TEAM CHALLENGE

MEMBERS PAGE

WHATS ON

SYLLABUS

CLUB INFORMATION

# FROM YOUR COMMITTEE

Leo Tancredi has kindly volunteered his services to take on the task of Safety Officer for the clubrooms, which the committee has accepted. Periodically Leo will undertake safety inspections to ensure we keep the appropriate safety standards.

The First Aid training course was completed by ten members of the club, with all now having the appropriate first aid certification. These members are listed on the noticeboard.

The End of Year Awards are fast approaching and its sub-committee is working very hard behind the scenes, including having secured fabulous judges. Details of the awards night, which will include supper, will be circulated very soon.

An email outlining requirements and due date for submissions along with entry forms has already been emailed to members, so start thinking now about what you would like to enter.

The club's photographic exhibition scheduled to take place after our End of Year awards, from 11th August to 3rd September at the Bial-a-Armstrong Creek Library, is in the planning stages. Further details to be issued in the coming weeks.

We are now in the last quarter of our club year with the AGM to be held in July. Please consider if there is a contribution you may be able to make to the club. Maybe think about nominating for a committee position - it can be very rewarding.

Keeping our kitchen provisions healthy: When milk is opened for meetings, we ask members to ensure they mark the top of the carton with the date it was opened, and place it into the fridge when finished with. A black marker is on the noticeboard in the kitchen.

The website is continuing to be under review so we will carry on as per the past few months. An update will be communicated as soon as there is further information. We continue to appreciate your patience during this transition time. □



## 2024-2025 committee:

- |                      |                   |
|----------------------|-------------------|
| • President:         | Robert Long       |
| • Vice President:    | Shelley McKiernan |
| • Secretary:         | Paul Muir         |
| • Treasurer:         | Meredith Bain     |
| • General Committee: |                   |
| Steve Davies         | Larry Devenish    |
| Heather Prince       | Lyn Northam       |
| Chris Reichl         | Bob Medwell       |
|                      | Judy Medwell      |

"One doesn't stop seeing.  
One doesn't stop framing.  
It doesn't turn off and turn on.  
It's on all the time."

— Annie Leibovitz



# APRIL COMPETITION RESULTS

PRINTS OPEN A GRADE

JUDGE: VICKI MORITZ



*First Place*

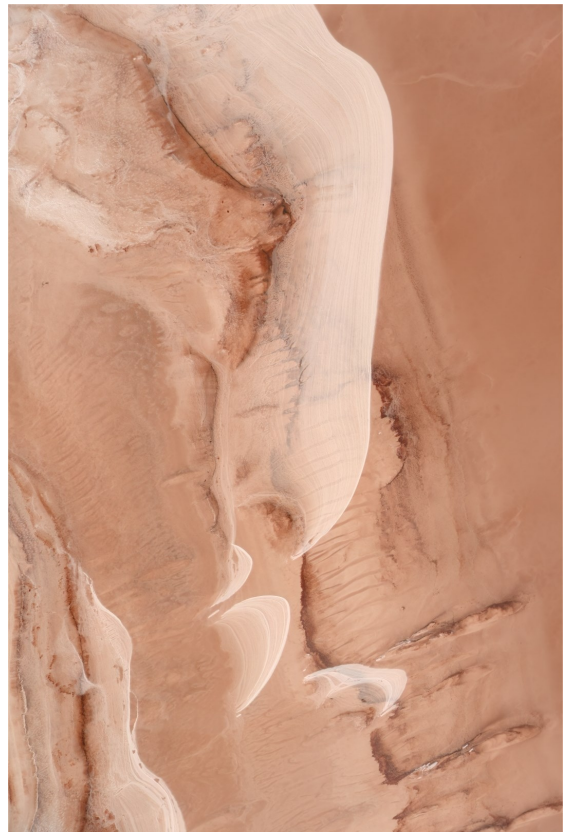
TREE GRAVEYARD

By Shelley McKiernan

*Second Place*

SALT WAVES OF LAKE WEERING

By Judy Medwell



*Third Place*

WILD BEAUTY

By Chris Reichl





# APRIL COMPETITION RESULTS

PRINTS OPEN B GRADE

JUDGE: VICKI MORITZ



*First Place*

FEMALE MOSQUITO

By Ketut Suwitra

*Second Place*

PAINTED DESERT NO6

By Sam Neumann



*Third Place*

KERMITS DEMISE

By Marion Best



# APRIL COMPETITION RESULTS

## A AND B GRADE OPEN PRINT MERITS

JUDGE: VICKI MORITZ



A Grade

HOPPER

By Sue Wilson



A Grade

INTUITIVE

By Peter Roupas

B Grade

BEACH WHALE R

By Sam Neumann



B Grade

COPE CREEK

By David Rendle



# APRIL COMPETITION RESULTS

EDI OPEN A GRADE

JUDGE: VICKI MORITZ



*First Place*

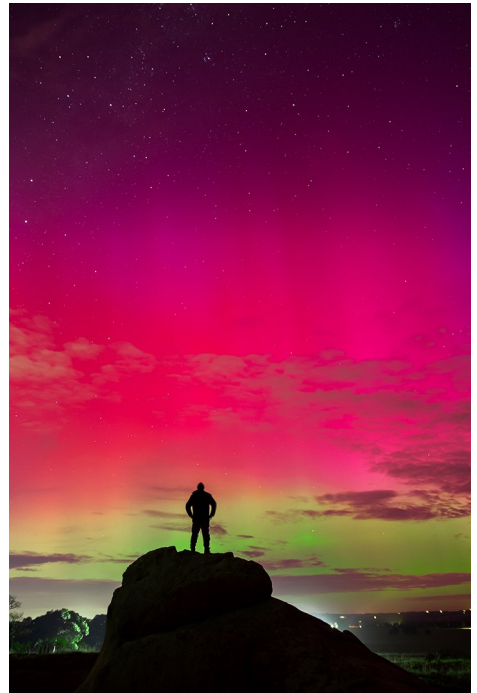
AMAZON WATERLILY

BY Nick Abbott-Young

*Second Place*

ENJOYING THE SHOW

BY Ketut Suwitra



*Third Place*

BROWN FALCON WITH TIGER  
SNAKE

By Phillipa Alexander





# APRIL COMPETITION RESULTS

EDI OPEN B GRADE

JUDGE: VICKI MORITZ



*First Place*

TREE WITH NEST

By Moyra Davies

*Second Place*

OWL TAKING OFF

By Andrew Leece



*Third Place*

BARREN

By Larry Devenish

# APRIL COMPETITION RESULTS

## A AND B GRADE OPEN EDI MERITS

JUDGE: VICKI MORITZ



A Grade

SWAMP HARRIER APPROACH

By Phillipa Alexander



A Grade

WATER BOMBING AIRCRAFT

By Judy Medwell

B Grade

SAND DUNE DECEPTION

By Bob Medwell



B Grade

LOOKING AT YOU

By Chris George





# APRIL COMPETITION RESULTS

SET SUBJECT BELOW THE KNEE A GRADE

JUDGE: VICKI MORITZ



*First Place*

COLOURS OF THE GROUND

By Phillipa Alexander

*Second Place*

WASHED UP

By Chris Reichl



*Third Place*

ECHIDNA ON THE ROCKS

By Phillipa Alexander



# APRIL COMPETITION RESULTS

SET SUBJECT BELOW THE KNEE B GRADE

JUDGE: VICKI MORITZ



## *First Place*

WALKING ON BY

By Chris George

## *Second Place*

CROC SMILE

By Andrew Leece



## *Third Place*

STEPPING OUT IN COLOUR

By Heather O'Flynn



# APRIL COMPETITION RESULTS

SET SUBJECT BELOW THE KNEE A AND B GRADE MERITS

JUDGE: VICKI MORITZ



A Grade

FABULOUS FOUR

By Shelley McKiernan



A Grade

MORNING SNACK

By Judith Wood

B Grade

STOMPERS

By Moyra Davies



B Grade

Only one merit

# LIGHTSEEKERS

## SPECIAL INTEREST GROUP

### Lightseekers April Activities.

April brought lovely Autumn weather, and for those who like to photograph flowers, the Begonia Festival at Ballarat. The Glasshouse at the Botanic Gardens had a wide range of Begonias, in excellent condition. We also found beautiful Dahlias, lots of birds on the lake, and a good spot for morning tea overlooking the water.

A fortnight later we ventured closer to home, the Blue Water Lake at Ocean Grove. There is a gentle walk around the man-made lake where there are the usual residents such as Pelicans, Royal Spoonbills, Ibis, Moorhens, and Purple Swampheens. The trick is to time your visit to find the birds actively feeding instead of quietly sleeping. Nearby is the Barwon River, making its way to the sea. On both sides of the river, there are mangroves, more accessible on the Barwon Heads side. This important habitat is the most western range of the White Mangroves in Victoria.

Our next meeting in the Club Rooms brings a presentation of our first Challenge of the year, Silhouettes. This has required us to look at our world differently, and I look forward to seeing the results.

Chris Reichl



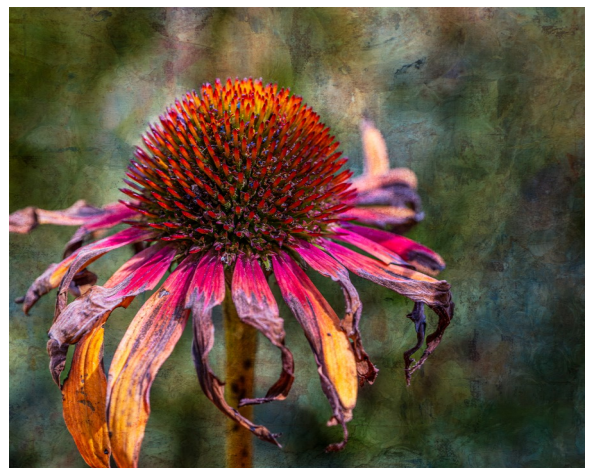
By Allan Wilkins



Ballarat by Chris George



The Usual Suspects by Chris Reichl



Ballarat by Judith Wood



# Chiltern Nature Camp

Friday 12 -Saturday 13 September 2025

Accommodation can be found at Lake Anderson Caravan Park, Chiltern

The camp ground is at 1 Alliance street Chiltern has the following

- park view cabins at \$115/n 2 available
- pods at \$130 /night
- lake view cabins at 155/night
- Powered caravan sites at \$50 /n

Contact KUI camp ground 5726 1298 to book as soon as possible as they will not hold sites for us. You are required to pay for 1 night when booking.

See the web site <https://kuiparks.com.au/parks/lake-anderson-caravan-park/> for location details and facilities.

Let John know if you are coming on [jbest3757@bigpond.com](mailto:jbest3757@bigpond.com)

We usually have a BBQ on the Saturday night or a pub dinner?? We can decide later.

Drinks on Friday night and a campfire on Saturday night are organised by Kui at the park for those keen to attend.

Chiltern, a historic village nestled in Victoria's High Country, offers a blend of heritage, nature, and local charm. Originally a farming community, Chiltern transformed during the gold rush and still retains its historical appeal with beautifully preserved buildings. A self-guided heritage walk through the town reveals sites like Dow's Pharmacy, established in 1859 and left untouched since 1968, offering a fascinating glimpse into early pharmaceutical history. Don't miss the Federal Standard Printing Works, one of the last remaining provincial newspaper printers from the gold mining era, which showcases the town's rich past.

Nature lovers and birdwatching enthusiasts will find Chiltern a paradise. The Chiltern Box-Ironbark National Park is home to over 220 recorded bird species, including rare sightings of the Regent Honeyeater and Swift Parrot. With a variety of bushwalking and cycling trails through native forests, it's an excellent spot for outdoor exploration. For panoramic views, take a hike to the Mount Pilot Lookout in the Chiltern-Mount Pilot National Park, where you'll enjoy breathtaking 360-degree vistas.

Chiltern also serves as the perfect base to explore nearby towns like Yackandandah, Beechworth, and Bright, each offering historic sites, boutique wineries, and classic country pubs. To the west, the renowned Rutherglen wine region is a must-visit, famous for its fortified wines and cellar door experiences. Whether you're interested in history, nature, or wine, Chiltern and its surrounding areas provide a diverse range of attractions for every traveller.

Sunrise on the 13 is 0623 and sunset at 1808 for the keen photographers

# CREATIVE SIG

The Creatives are back and enjoying their new Tuesday night meetings. Over the last few weeks we have had several inspirational topics: 'Coming Out of the Frame', 'Levitation' and 'A Line from a Song'.

Heather has been viewing the 'Photoshop Creativity Virtual Summit 2025' and has shared some of the creative ideas from that event. One presenter was the well known creative artist, Joel Robinson. Heather bought a pack of his 'Creative Sparks' cards - a box of 60 playing cards with creative ideas. You will see many of them in the future!



Heather O'F 'Line from a Song'. The Banana Boat Song.....A beautiful bunch o' ripe banana.....Hide the deadly black tarantula. Look closely and you will see them!



Heather P 'Levitation'



Ketut 'Landing'



Heather P 'Out of the Frame'



Gihan 'Out of the Frame'



# ANALOGUE

## SPECIAL INTEREST GROUP

### VINTAGE PORTRAITS WITH VINTAGE CAMERAS

Later in this newsletter, an article features the special night provided by Darren Henry where he showcased some of his vintage camera collection. The night finished off with some old-fashioned portraiture using old-fashioned cameras. Below are two images taken from one of Darren's cameras.

Things don't always go to plan and Darren's 100 year old camera suffered mechanical failure. Fortunately, Darren found a back-up camera amongst the twenty or so sitting on the table. Old cameras don't have

built in light meters and Darren relied on an old rule of thumb for exposure. With a hand held light meter he measured a reading from the palm of his hand. The meter provided exposure settings to render his hand as an 18% mid tone grey and Darren opened up one stop as a correction. The below images have no exposure or curve adjustments demonstrating that the old rule still works. There is a softness with these images as a result of long exposures due to the limitations of the very old camera.



At my 'studio', I attempted to replicate old fashioned portraiture. I chose to take Brett's portrait because I was looking for a sporty tennis player from the 1920's, complete with knitted vest, blazer and wooden racquet (see image on next page).

The studio lighting was a classic 45° key and fill light set up to render the "Rembrandt" look. Both lights were diffused within soft-boxes, with the fill light half the strength of the key light. I noticed that one backdrop was a mid tone grey and simply took my exposure reading from that backdrop as if it was a grey card. The exposures were terrific,

resulting in quality negatives with a full range of tones. The portrait of Brett on the next page has not had any post-production exposure adjustments. The lights were a little low on power, which meant working within the exposure sweet spot was a delicate process. In large format photography F8 (and even F11) is considered a wide aperture that yields a shallow depth of field. At a fixed 400 ISO, F8 required a shutter speed 1/30 second which is too slow for a close-up model to sit still. I decided that I needed F11's DOF and shot two exposures of Brett at 1/30 sec. anyway.

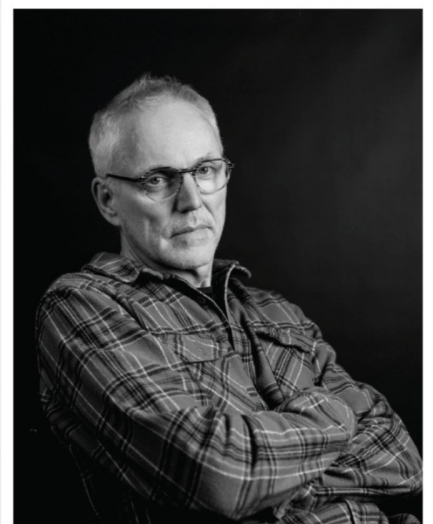
*cont'd...*

The lens used is a 210mm portrait lens (equates to 80mm in 35mm or standard formats). Like most portrait lenses, it's extremely sharp but the DOF can drop away quickly. Knowing that I was limited to F8 or F11, I applied 'swing' to the front standard to align the lens parallel with the angle of the eyes. It's a large format camera movement technique that brings more sharpness across the eyes. I'm pleased with the resulting DOF with this portrait.



Marion was chosen because I felt that her face and light hair would look great contrasting against the dark background. Her portrait was taken with similar technique. However, the lens is particularly sharp and I wanted to trial the affect of a soft-focus filter. Two shots were taken, with and without the filter.

Jan volunteered himself as a model and I simply took the picture as he wanted it. Allowing a model to simply sit naturally can often convey the relaxed look you're after. □



David Rendle



# INTERCLUB REPORT

## PHOTOGRAPHIC SOCIETY OF AMERICA

The club's entries for Round Three of the PSA Interclub have been uploaded and are currently being judged. Thanks to the selectors Frank Kennedy (Photojournalism); Shelley McKiernan (Photo Travel); Dee Kelly (Nature) and Peter Roupas (Monochrome) and I select the Open entry.

This is the last round for the 2024-25 season. All images from the three rounds that have received a Merit Award will go through to an End of Year

Judging, which is held in June, to determine the overall Division winners. The next season starts in November 2025.

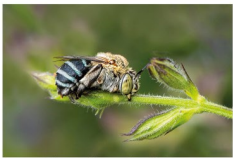
All the awarded images and club standings from Rounds One and Two are available to view on the PSA website at:

<https://psa-photo.org/page/competition-results>

Good luck with your entries everyone!

**Phillipa Alexander**

### PID Colour Interclub, Round Three



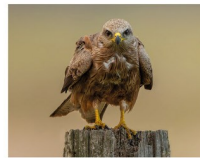
Blue-banded Bee  
Entry # 1  
Judith Wood



The Beauty in Decay  
Entry # 2  
Brian Farey



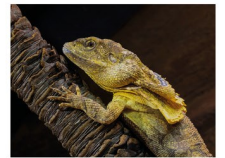
What Am I Doing Here  
Entry # 3  
Noel Ritchie



Black Kite  
Entry # 4  
Phillipa Alexander  
EFIAPp; MPSA



Sapphire Coast Sunset  
Entry # 5  
Malcolm Phillips



No Frill Today  
Entry # 6  
Marion Best

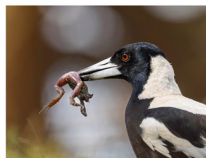
### Nature Division Interclub, Round Three



Graceful Hunter  
Entry # 1  
Julie Begg  
EFIAP



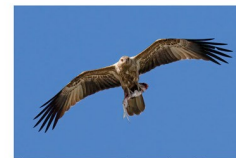
Resilience  
Entry # 2  
Peter Roupas  
AFIAP



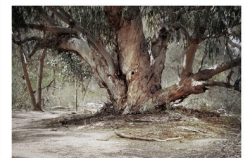
Kermits Demise  
Entry # 3  
Marion Best



The Gift  
Entry # 4  
Lyn Northam



Whistling Kite with Catch of the Day  
Entry # 5  
Judy Medwell



Old Gum  
Entry # 6  
Mick Kupresanin

### PID Monochrome Interclub, Round Three



After the Finale  
Entry # 1  
Dee Kelly



Behind The Silence  
Entry # 2  
Julie Begg  
EFIAP



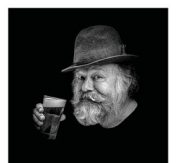
Tess Portrait 1  
Entry # 3  
Peter Roupas  
AFIAP



Sky Racer  
Entry # 4  
Phillipa Alexander  
EFIAPp; MPSA



Collins  
Entry # 5  
Shelley McKiernan



Good Luck  
Entry # 6  
Frank Kennedy  
EPSA, AFIAP

### Photojournalism Division Interclub, Round Three



Bombed Out  
Entry # 1  
Robert Medwell



The Crasher  
Entry # 2  
Hans Kawitzki  
EFIAP



Rough Ride  
Entry # 3  
Jane Cross



Skier Trick  
Entry # 4  
Frank Kennedy  
EPSA, AFIAP



Bicycle Crash  
Entry # 5  
Noel Ritchie



Shot for Goal  
Entry # 6  
Shelley McKiernan

### Photo Travel Division Interclub, Round Three



Misty River Angler  
Entry # 1  
Julie Begg  
EFIAP



The Taj  
Entry # 2  
Ian Chalmers



Wondrous Waterfall  
Entry # 3  
Larry Devenish



Yellow Coat  
Entry # 4  
Mal McKiernan



Sharks Fin  
Entry # 5  
Lyn Northam



Giraffe and Baby  
Entry # 6  
Shelley McKiernan



# THE INTREPID TRAVELLER

## Living and Working in ENGLAND



by Allan Wilkins

This is both a travelogue and an opportunity for me to reminisce on some personal history.

In 1990, largely due to the vision of my wife, an extended working holiday to England was planned. I had a grandmother who was born in county Donegal, Ireland. As Ireland was part of the UK up until 1922 and granny was born before that, I was entitled to a "UK Grandparent Entry Certificate". This enabled me to both live and work in the UK indefinitely.

Arrangements were made to rent out our house and on January 8th, 1990 we headed off on our adventure. 'We' being my wife, daughter aged 16 and son aged 13. Neither child was at all happy with being dragged out of their comfort zones and away from their friends.

We had a three-night stopover in Singapore where the sights and sounds were enjoyed but not the heat and humidity. I purchased my first 'real' camera there, a Nikon F401s. These were the days when buying duty-free gave a substantial saving.

On arrival in London mid-January the memories I mainly have is to how cold it was, how bare all the trees were and how short the days were.

Our mode of transport for the next 10 months was purchased, a 1979 VW Kombi van with a brand-new camper conversion.



*The intrepid travellers*

Time was spent applying for teaching jobs and in the days before mobile phones and the internet this was a long, drawn-out process but it allowed time to enjoy the usual tourist sites such as Big Ben, Harrods, Tower of London, Camden Road Market, Madame Tussauds and also learning how to negotiate the wonderful Underground.

I was eventually invited to an interview at Portsmouth

around 120km and 90 minutes away on the south coast. The date was 25th January and the interview was for early afternoon. We set out early morning allowing plenty of time to reach Portsmouth.

It was very windy and very soon became very scary. A VW Kombi is not the most aerodynamic of vehicles and we were being buffeted in a dangerous way. There was a lot of debris being blown around and we then started coming across a number of trucks blown onto their side as well as trees partially blocking the motorway. On several occasions the wind was so strong the pop-top on the Kombi was threatening to lift up and needed the passengers to hold it down from the inside.

January 25th is the birthdate of Robert Burns, the Scottish author and poet. The storm became known as the Burns Day Storm and in Britain 47 people were killed that day, mostly from collapsing buildings and flying debris.

Travelling on the motorway was becoming increasingly dangerous so we sheltered at Uxbridge, about halfway, and whilst there we mostly managed to dodge the flying glass and roof tiles.

We made it to Portsmouth the next day and I eventually started a job that would take me through to the end of the school year (July).

Portsmouth is a naval base and was heavily bombed during the second world war. It therefore does not have the number of historic buildings that are common in many English towns. It is nevertheless an interesting city surrounded by gorgeous countryside and picture-postcard villages. Many weekends were spent exploring the nearby counties including the nearby Isle of Wight.



*The Portsmouth/Australia connection*



## *Living and Working in England by Allan Wilkins*

Mid-term and term breaks enabled us to travel to many other English counties and also to Ireland, Wales and Scotland.



*Wild Haggis, Edinburgh, Scotland*



*Thatched-roof house, Hampshire*

The good thing about living in England for an extended time was that it gave the opportunity to experience everyday activities, like car-boot sales and village fairs.



*Ferret Racing at village fair*



*The racing ferrets*

When the school year finished in July we took off in the Kombi for a five week trip around Europe.

In France, the first challenge was driving on the right-hand side of the road in a right-hand drive vehicle; not recommended without a passenger/lookout.

Every day was a new adventure as we travelled through France, Switzerland, Italy, Greece and the Greek Islands, Yugoslavia (as it then was) Hungary, Germany and the Netherlands.



*Camping ground, France*



*Free camping, Greek Islands*



*Waiting for Greek Island Ferry*



*Greek Island Ferry*

On returning to England, some time was spent in York where I did some relief teaching. Not much teaching was done however, as the students had as much trouble understanding my accent as I had of their broad Yorkshire accents.



## *Living and Working in England by Allan Wilkins*

The trip was enjoyed so much that my wife and I were keen to do it again but this time without the children. Therefore, in January 1997 we returned to England - this time for 19 months.



*Sofa being removed from our Weymouth house*

I first worked in Weymouth from January to July. Weymouth is in the beautiful county of Dorset with its gently rolling hills and many picturesque villages.

From August 1997 until July 1998 I worked in Braintree, Essex, and we lived in the nearby village of Bocking which is a very old village mentioned in the Domesday Book. Across the road from our mews apartment was St Mary's, a gothic church dating from the 15th and 16th centuries.

We weren't regular users of the church but did get a use of the church green. Along with visiting Australian friends we were able to continue the Australian tradition of a game of cricket on Christmas Day.

Bocking's location enabled day visits to London and is also adjacent to East Anglia which has lots of Viking

history as well as numerous examples of medieval timber-framed houses.



*View from apartment in Bocking, Essex*



*Christmas Day cricket, Bocking*

*A day out on the narrow backroads of the Dorset countryside*



The opportunity to live in a foreign(ish) country such as England for an extended time allowed for leisurely and wide-ranging exploration of the countryside and also allowed for a greater opportunity to appreciate English history.

The two working holidays in England did whet my appetite for travel and I have been fortunate enough to have travelled overseas since then but the first two trips will always be very special.

I had long been a happy-snapper photographer and these trips encouraged me to take lots of snaps and develop my love of photography. I am so glad I now have those photos to look back on but I also see how far I have to go with my photography. I'm still on that journey. □



*Half-timber House, Lavenham, Suffolk*



*Lavenham, Suffolk*



# GUEST SPEAKER

## DARREN HENRY ON VINTAGE CAMERAS



Darren's talk included a screen presentation along with handing around his cameras for members to have a closer look at.

Gloria, Heather and Mal are having a very close look!



Images kindly supplied by Gerry van der Meer

The guest speaker at our 9th April meeting has a photographic hobby with a difference. Darren Henry is an enthusiastic collector of vintage cameras and presented a show-and-tell of 30 of his favourite cameras. He described the end to end process he goes through to use film-based images in creative ways. Included in a PowerPoint presentation were a collection of images he had taken on various cameras - so he does use them!

Darren has collected cameras for many years and brought along cameras from an 1890s large format to a classic Nikon SLR from the 1980s, as well as many other cameras from the hundred years in between. While describing the cameras, a presentation with technical information and fun facts were on screen, as each camera was passed around for members to have a close look at. Some of these cameras were quite fragile and others very hardy.

It is amazing how cameras have evolved over the years and just how the 'inventors' from the past overcame a perceived (or actual) weakness in a previous camera version.

David Rendle also spoke about his interest in film photography and brought along his Linhof large format camera.

cont'd...



Darren shows Darryl the intricacies of the old camera



## GUEST SPEAKER - VINTAGE CAMERAS ....cont'd

After both Darren and David spoke about their respective interests, they shared their cameras with members, who were invited to use them and see first-hand the complexity of taking photographs with these cameras.

It was fascinating looking into the viewfinder, under the black cloth-over-the-head, to see an upside-down version of the model whose picture was being taken. David explained how he metered the light for an individual shot. It is not like digital where you can take another shot if settings are a little off - when using film each shot is expensive so it is critical you know all about your camera and its settings!

The two cameras used on the night were large and bulky and made one realise that as a landscape photographer of the past, to make it worthwhile, it really did involve a whole day excursion to go out and take images in that era.

Although as photographers we have it relatively easy in our modern age, there's nothing quite like the soul of an image taken by film and processed the 'analogue' way. The blood, sweat and tears that goes into the process of getting the image just right is something many of us digital photographers just don't realise.

Thank you to Darren and David for taking us to a place in the past where there was only film photography.

Overall, it was a very informative and entertaining evening, enjoyed by many and we appreciated their sharing of not only their knowledge but also of their precious and fragile cameras, as well as the studio props they thoughtfully brought along.

We are not sure who had the most fun, the members or the presenters!

Special thanks also goes to Gerry for his dedication in recording the evening in images; he is usually at these types of events taking those record images. □



*Models Brett, Harry and Gloria in period costumes and poses*



*Rob and Lyn get a lesson from Darren*





# MEMBERS PAGE

## TEAM CHALLENGE 2025

On Wednesday 26th March our annual Team Challenge was held, with four teams heading off in different directions.

Our teams and their locations were:

- **Barwon Heads - Team 1**  
Bob and Judy Medwell (team leaders),  
David Bridge, Heather O'Flynn,  
Sheryle Griffiths, Darren Hawkes
- **Waterfront / Eastern Beach Area - Team 2**  
Chris Reichl (team leader), Chris George,  
Julie Cannon, Sandra McArthur
- **Library / Arts Precinct Area - Team 3**  
Sue Wilson (team leader), David Grant
- **Industrial Area North Shore - Team 4**  
Heather Prince (team leader), Larry  
Devenish, Gloria & Gerry van der Meer

Six challenges, devised by Heather Prince, were:

- **Elements of Design:** repeating objects - three or more
- **Geometric:** triangle(s)
- **Topical:** human carelessness
- **Contrast:** shadows - converted to black and white
- **Texture:** wear and tear
- **Conceptual:** Alone - concentrating on a lonely object in a vast space (you may use your fellow photographers as models for this one)

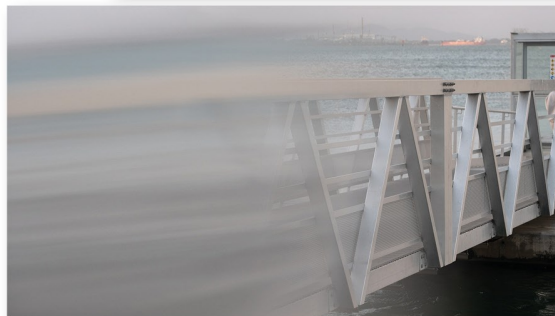
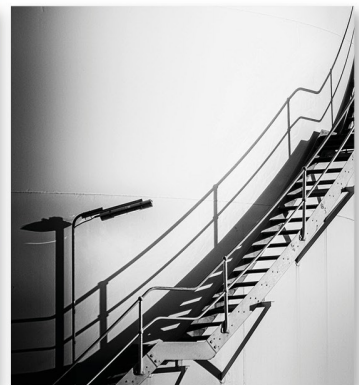
During the review of images, a selected number of judges scored the images against the topics. The placings were in line with the team number and possibly a factor of the number of members per team.

- **First Place - Team 1**
- **2nd Place - Team 2**
- **Equal 3rd - Teams 3 & 4**

There were more members scouting around on the night than is reflected in the images received.

It's always a treat to go out in the evening with others on a similar quest. Images very fitting to the challenges were captured during the evening.

Thanks to all the team leaders for giving their time to 'lead' the groups and thanks to those who submitted images to make this night a success again this year. □





# MEMBERS PAGE

## IMAGE CRITIQUE NIGHT

At a recent club meeting Heather Prince presented information on critiquing an image. She showed images from a mixture of photographers and asked the audience what their thoughts were of each image (without all knowing who the photographer was). It was very interesting and all had the same thought that many of yesterday's images would not do well in today's judging even though they were great photos, some being worth a small fortune today.

After the slideshow, everyone broke up into groups where they discussed printed images supplied by members, each group coming up with their 'best'

(most impact), to their 'least' (not much impact), which they then talked about why those choices of images had been made. It was a very good exercise for members to be involved in.

Heather's final comment was that we should be kind to the judges and this exercise did give an insight into just how difficult their job could be.

Many thanks to Heather for her insightful talk and sharing her actual presentation, which has been emailed to members.

Many photographers showcased in the presentation are well worth researching on line. □

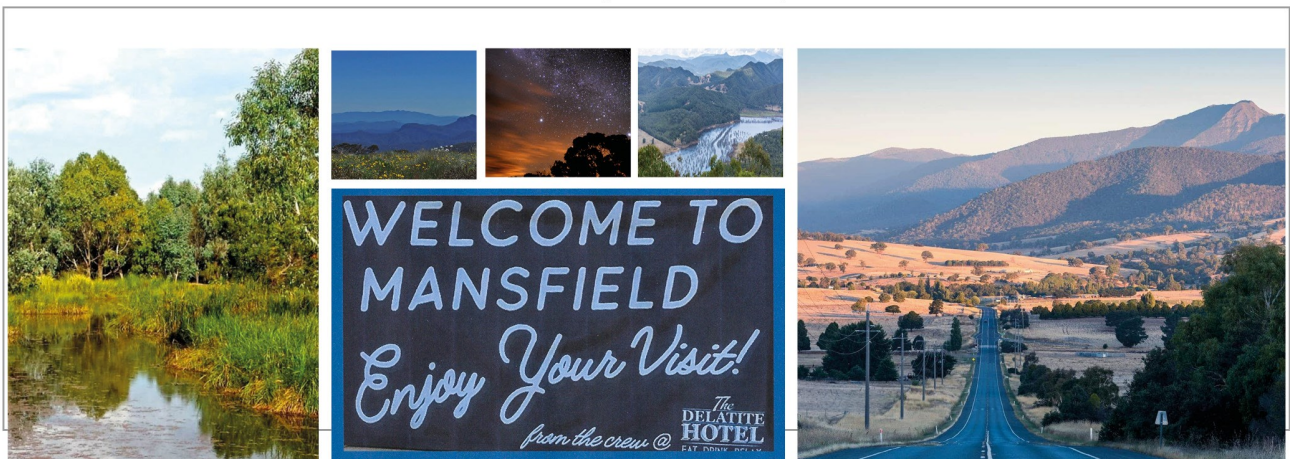
---

## WHAT'S ON

### CLUB CAMP

#### Mansfield

Autumn Camp - 16-18 May 2025



At this stage there are nineteen members off to the 'High Country' - only a couple of weeks before the 'Campers' set off for some autumn colours and into a world of large scale and intimate vista photography.

Members will be staying at the High Country Holiday Park at 1 Ultimo St, Mansfield. Some sites and cabins were put on hold for GCC members but this booking deadline has now passed, but may be worth a phone call if you are considering attending, or look for some other nearby accommodation.

The Mansfield Visitor Information Centre has offered to provide club members a tour pack of sights, nature walks and points of interest, so when you decide to attend the camp please contact Judy

Medwell (0413 383 772) who will arrange the packs.

A 'WhatsApp' group will be established for easy communication of our social and photographic activities; for members who may not have the app, text messages and bush telegraph will be the communication 'tools'.

Looking forward to seeing you there (how many sleeps now before members start making tracks to the high country?) □

---



# WHAT'S ON

## COMPETITION NIGHT

**Wednesday 7th May - Competition Night** - results of May competition  
Competition entries due for Open Prints, Open EDI, SS EDI: Black & White at Home

---

## BIRDS AND NATURE INTERCLUB

**Monday 12th May - Camberwell Interclub** - via Zoom - all members will be invited to log in from home using their own devices - details will be sent via email closer to the time

---

## MEMBERS NIGHT

**Wednesday 14th May - Technical Night: Macro / Still Life** - hands on so bring your cameras  
**Guys 'n Gals Competition Draw** - names to be drawn out of the hat for this competition - 10 guys, 10 gals

---

## GUEST SPEAKER

**Wednesday 21st May - Guest Speaker Mark Bloot'Hoofd** will be presenting 'The Eye of the Photographer, Beyond the Tech' - exploring the art of creating and capturing moments that resonate; a focus on the importance of mood, emotion and impact in photography; plus more 'beyond the camera'

---

## SIGs PRESENTATIONS

**Wednesday 28th May - Presentations by Special Interest Groups**  
Lightseekers, Creative, Birds and Nature, Analogue SIGs will give an insight into their respective groups.

---

## LIGHTSEEKERS

*Please be aware the topics listed below could change throughout the month due to unforeseen circumstances - keep up to date with the latest Lightseekers syllabus on the entrance noticeboard*

- Thursday 1st May** - Clubrooms: Images from Blue Lake Waters plus Term 1 Theme - Silhouette
- Thursday 8th May** - Field Trip: Werribee Zoo (MB)
- Thursday 15th May** - Clubrooms: Images from Werribee Zoo
- Thursday 22nd May** - Field Trip: Daylesford in Autumn (SG)
- Thursday 29th May** - Clubrooms: Images from Daylesford

**Term 1 Theme: Silhouette**

**Term 2 Theme: Unusual Angle/Perspective**

---

## COMPETITIONS COMING UP...

### ~ End of Year Awards ~

End of Year Awards will be held in July, therefore no monthly competition entries are due

**End of Year entries are due by Wednesday 4th June 2025**

Entry information has been sent via email to all members

**Entries close on 4th June - late entries will not be accepted**

# SYLLABUS

*Descriptions of Set Subjects can be found on the website under Competitions/Set Subject Competitions or on the noticeboard*

| APRIL 2025 |        |          |   |
|------------|--------|----------|---|
|            |        |          | <b>Social Night</b> (5th Wednesday)<br><b>Fyansford Hotel</b> for dinner in the front room - come along for a relaxed and informal member (and spouse/partner) social night and get-to-know-you evening.<br><b>Please note the clubrooms will be closed on this night</b>   |
| WED        | 30     | 6:00 PM  |   |
| MAY 2025   |        |          |   |
| THU        | 1      | 10:00 AM | Lightseekers: Clubrooms; Term 1 Theme, Silhouette   |
| WED        | 7      | 7:30 PM  | <b>Competition Night</b> - Open Prints; Open EDI; Altered Reality EDI<br><i>Comp Entries Due for Open Prints; Open EDI; SS EDI: Black &amp; White at Home</i>   |
| THU        | 8      | 10:00 AM | Lightseekers: Outing  |
| MON        | 12     | 7:30 PM  | Birds & Nature SIG: Camberwell InterClub ( <i>Zoom, at home - link to be advised to all closer to date</i> )  |
| WED        | 14     | 7:30 PM  | • <b>Technical Night:</b> Macro / Still Life - hands on, so bring your cameras<br>• <b>Guys 'n Gals Competition Draw</b> - member names drawn 'out of the hat'  |
| THU        | 15     | 7:30 PM  | Lightseekers: Clubrooms   |
| FRI-SUN    | Sun 18 |          | <b>Club Camp - Mansfield</b> (see Noticeboard for further information)<br><b>Guest Speaker: Mark Bloot'Hoofd</b> , 'The Eye of the Photographer, Beyond the Tech' - exploring the art of creating and capturing moments that resonate; a focus on the importance of mood, emotion and impact in photography; plus more 'beyond the camera'. |
| WED        | 21     | 7:30 PM  |   |
| THU        | 22     | 10:00 AM | Lightseekers: Outing  |
| THU        | 22     |          | Committee Meeting   |
| WED        | 28     | 7:30 PM  | • <b>SIGs: Presentations by Special Interest Groups</b><br>Lightseekers, Creative, Birds and Nature, Analogue   |
| THU        | 29     | 10:00 AM | Lightseekers: Clubrooms   |
| JUNE 2025  |        |          |   |
| SUN        | 1      | Time TBA | Birds & Nature SIG: Outing - Ballarat Wildlife Park   |
|            |        |          | <b>Competition Night</b> - Open Prints; Open EDI; SS EDI: Black & White at Home<br>( <i>NOTE: no Monthly Competition entries due this month due to EOY</i> )  |
| WED        | 4      | 7:30 PM  | <b>End of Year Awards - entries due</b> ( information was sent to members early April)  |
| THU        | 5      | 10:00 AM | Lightseekers: Outing  |
| WED        | 11     | 7:30 PM  | • <b>Guys 'n Gals Competition Print Entries Due</b><br>• <b>Technical Night:</b> Mat Cutting and Printing<br>• <b>Club Camp Photos</b> - presentation   |
| THU        | 12     | 10:00 AM | Lightseekers: Clubrooms   |
| FRI-SUN    | 13-15  |          | <b>VAPS Convention - Castlemaine</b> (Refer to VAPS website for further information)  |
| MON        | 16     | 7:00 PM  | Committee Meeting   |
| WED        | 18     | 7:30 PM  | <b>Members Night:</b><br>A presentation by the 'Dronies' incorporating their drone photography adventures   |
| THU        | 19     | 10:00 AM | Lightseekers: Outing  |
|            |        |          | <b>Guys 'n Gals Competition - Results Night:</b><br>Splash on some colour - guys wear blue, gals wear pink - witness a fun night of the long-held rivalry between these two very competitive groups - who will the 'much-coveted' trophy and bragging rights go to this time?<br>• Bring supper plate to share                              |
| WED        | 25     | 7:30 PM  |   |
| THU        | 26     | 10:00 AM | Lightseekers: Clubrooms   |

*Updated: 23 April 25 | 11:50am*



# MEMBER INFO

## MEMBERSHIP FEES

### ANNUAL FEES

Membership fees are paid annually and are due by 1st August each year.

Payment process is advised to members prior to the due date.

\$65.00 Single

\$55.00 Single Concession\*

\$55.00 Full Time Student

\$95.00 Family (2 People - \$35 each additional family member)

\$80.00 Family Concession\* (2 People - \$30 each additional family member)

(\*Concessions: Age Pension, Government Seniors Card, Unemployed, Full Time Student, Disability Pension)

ProRata Membership Fees:

January to 30th July = 50% of full year fees as listed above

May to 30th July = all fees nil, or 25% of full year fees for voting and competition rights

---

## MEMBER FACILITIES

### STUDIO HIRE

Studio facilities are available to those who have been members for at least three months and must be booked through the club treasurer.

The main hall of the clubroom may be used as a studio. GCC have their own lighting equipment and three backdrops (white, black and green screen); backdrops must be cleaned after use.

Club lighting is available only after the member has been instructed in the use of the lights and equipment; it is not available to non-club members.

Fees are as follows:

\$20.00 per session for members using their own studio lights

\$40.00 + \$50.00 refundable bond per session for members using the club's studio lights

### DARKROOM

The darkroom manager is the contact person for organising use of darkroom facilities - please see a committee member who can advise contact details.

---

## MEMBER APPAREL

We have a range of club logo clothing including jackets, tops, caps and beanies available to members for very reasonable prices. These are available for ordering from a local supplier via our website.

---

## LIBRARY

Instructional, special interest and general photographic books and magazines are available to borrow. Limit three books for two weeks. When borrowing, the library register is to be completed, recording borrower's name, book title and date borrowed.

There are two cabinets - one that all members can access; the second is a locked cabinet and requires one of our library officers to be in attendance for access.

---